

TENTS FOR RENT
AWNINGS
TENTS · FLAGS
· COTTON DUCK ·
WATER PROOF COVERS

ESTABLISHED 1897
R. Laacke Co

543 - 545 THIRD ST.
MILWAUKEE, WIS.
September 12, 1928.



Mr. W. J. Bailey,
Box #201,
Montevallo, Ala.

Dear Sir:

Willie's mother --

had just given him a stern lecture based on some little act of mischief, and reminded him that even though no one would ever see his misbehavior, God's eye was upon him always.

As he walked down the street he noticed faithful Fido following close behind.

He motioned the dog home with a disgusted: "Aw, gwan home, Ain't it enough to have God's eye always on me, without you followin' me everywhere?"

Now we really do not want you to think we are following you everywhere, but you'll remember you wrote us about our KANT KOM OFF Cow Blankets and we answered your inquiry immediately and followed it with a second letter.

Maybe its our fault. Maybe we did not make it clear just how good the KANT KOM OFF Blanket really is. Maybe there's something else you'd like to know about these Blankets before buying. If there is, won't you just drop us a line, Please?

We'd certainly like to hear from you.

HJL: IW

Very truly yours,
R. LAACKE COMPANY


Sales Manager.

1-66

3-64

2-60

1-58

1-54

3-52

1-48

2-46

14-

The Cow Blanket that Can't Come Off!

Distinctive Features Granted a Patent

This is the only cow blanket granted a patent on features insuring against coming off the cow—straps going over the hips and encircling the hind legs on the inside; which combined with the front and shoulder fastenings, positively prevent the blanket from coming off. Substitutes now on the market do not have the hip strap for a support of the leg stay.

This patented feature also prevents sagging, making a better fitting, neater covering—for the straps run directly through the blanket after passing over the hips.

The only blanket that covers correctly, fully and snugly—that *stays on and keeps its shape*. Therefore the trade mark name—"Kant-Kom-Off."

Three Kinds of Fabric

Our many years of experience with materials indicate three kinds—Burlap, Duck and All-Wool Felt.

Burlap

Our Burlap (12 oz. Satin finish) forms an inexpensive blanket for barn and transportation, and is worth its cost if only used on the animal during milking time, as a fly protection. It serves to keep the animal clean during shipment and saves many hours afterward in conditioning the animal for sale or exhibit.

Duck

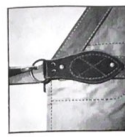
We stock canvas Duck blankets, both lined and unlined, in three desirable colors—Khaki, White and Battleship Grey. The Khaki has proven most popular because it stays clean longer and the contrast in color shows the animal off to good advantage. They make excellent show blankets, cost only a trifle more than the burlap while their greater durability makes them out-wear the burlap to an appreciable extent.

Felt

The All-Wool Felt blanket is made up lined or unlined—in a wide range of color combinations which are most striking and attractive for show purposes. For example: A White Felt blanket with black border and name of owner, farm or animal in black felt letters creates a most distinctive impression.



Patented fastener passes through loop-hole and lies flat. No metal touches cow.



Note Strength and Durability. Buckle substantially sewed and riveted.

Condition Your Stock

By blanketing all your live stock with the perfect fitting Kant-Kom-Off cow blankets their hair will lie smooth, soft and silky, conditioning them as they need to be for show and sales occasions.

They will protect you against the serious losses of stock and money resulting from cold and pneumonia—they keep the animals comfortable while insuring your investment.

Maintain the yield of your cows, particularly in fly season, by the simple means of giving them the thorough, comfortable and perfect fitting protection of Kant-Kom-Off blankets.

Lined Blankets

During freshening time the necessary added protection from colds and draughts is amply provided by our lined blankets. Furthermore, a lined blanket is superior for conditioning use before sales and shows, as it promotes a clean, rich glossy development of the hair while keeping it smooth and flat.

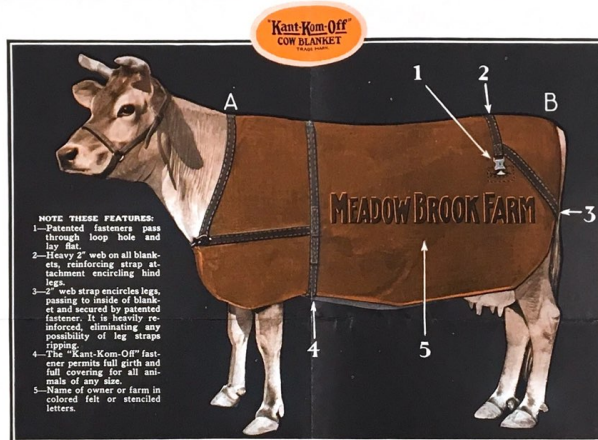
Better Care For Your Animals

Just throwing any old thing over your calves, cows and bulls—pieces of burlap, or even ordinary blankets, that not only *can*, but *will*, come off, at their best failing to blanket the animals adequately—is poor economy when for a reasonable price you can fit them perfectly in every way—appearance, comfort, and protection—with Kant-Kom-Off blankets.

Your investment of money in the expectation of making profits demands this protection—and as a good stock owner you want to give your animals the best of care.

When buying blankets, be sure they have the hip straps and leg stay attaching through loop on blanket at hips—the Kant-Kom-Off trade mark is your guide and protection.

All blankets made in 27 sizes—only one measurement necessary regardless of size of animal.



NOTE THESE FEATURES:
1—Patented fasteners pass through loop hole and lay flat.
2—Heavy 2" web on all blankets, reinforcing strap attachment encircling hind legs.
3—2" web strap encircles legs, passing to inside of blanket and secured by patented fastener. It is heavily reinforced, eliminating any possibility of leg straps slipping.
4—The "Kant-Kom-Off" fastener permits full girth and full covering for all animals of any size.
5—Name of owner or farm in colored felt or stenciled letters.

Easy to Order

Send in your order today, using convenient order blank enclosed. Give color and material wanted—and for size of blankets send measurements of animals from shoulder to hind hip—A and B in illustration. Specify lettering if desired: *sewed felt or stencil*.

FOR PRICE LIST SEE BACK PAGE

R. LAACKE COMPANY

543 Third St., MILWAUKEE, WIS.

The Kant-Kom-Off Cow Blanket

Prices quoted herein are for the original and only "Kant-Kom-Off" blankets. Made of only the best and most durable materials. Endorsed by live stock breeders everywhere.

Price List Effective May 1st, 1928

No. 1 Standard 12-oz. Satin Finish Burlap
Suitable for yard, stable and shipping use; also for use at small fairs and exhibitions.

	Unlined	Lined
48 inches and under.....	\$2.90	\$4.30
50 to 68 inches inclusive.....	3.20	4.95
70 inches and over.....	4.40	7.40

No. 2 White Duck
Unequaled for durability. An excellent blanket for exhibition purposes. Popular with all breeders.

	Unlined	Lined
48 inches and under.....	\$3.40	\$4.80
50 to 68 inches inclusive.....	4.10	5.85
70 inches and over.....	5.60	8.60

No. 3 Battleship Gray Duck
An attractive appearing blanket. Popular with exhibitors. Same quality as No. 2.

	Unlined	Lined
48 inches and under.....	\$3.40	\$4.80
50 to 68 inches.....	4.10	5.85
70 inches and over.....	5.60	8.60

No. 4 Khaki Duck
A serviceable blanket. Same quality as No. 2 and No. 3. Used extensively for all purposes by leading breeders. An excellent fly blanket. Can be worn continuously because it is not easily soiled.

	Unlined	Lined
48 inches and under.....	\$3.40	\$4.80
50 to 68 inches inclusive.....	4.10	5.85
70 inches and over.....	5.60	8.60

Nos. 1, 2, 3 and 4 are made without trimmed borders. To trim with plain or fancy web, add 60c per blanket. Wool felt, \$1.75 per blanket.

No. 5 Wool Felt (All Colors)
Beyond excellence for adding charm to the appearance of prize winners. It carries an appearance of dignity to the wearer. Only the best felt used together with plain or fancy web trimmed border. This insures durability and long service.

48 inches and under.....	\$8.90
50 to 68 inches inclusive.....	10.90
70 inches and over.....	13.90

Wool felt trimming \$1.40 per blanket. Advise colors desired in body, trim, or sewed on felt letters.

Extra for Lettering Felt Letters Sewed On.

3 inch.....	15c per letter
4 inch.....	18c per letter
5 inch.....	25c per letter
6 inch.....	30c per letter

Stenciled with Paint
1½ or 2½ inch.....3c per letter

TERMS—Check with order. If shipment is desired via Parcel Post, add Postage. Table below gives rates. If credit is desired, bona fide references must be sent with order.

Quantity Discounts: 1 to 9, Net. 10 to 50, 5%. 50 and over, 10%.

Please refer to illustration on inside page, showing method of measuring.

Parcel Post Rates

	First lb	Each Additional lb		First lb	Each Additional lb
Local	5c	½c	5th Zone	8c	6c
1st Zone	5c	1c	6th Zone	9c	8c
2nd Zone	5c	1c	7th Zone	11c	10c
3rd Zone	6c	2c	8th Zone	12c	12c
4th Zone	7c	4c			

Weight of Blankets Each

	Unlined	Lined
48 inches and under.....	3 lb.	5 lb.
50 to 68 inches inclusive.....	4 lb.	7 lb.
70 inches or over.....	5 lb.	9 lb.



Black or Tan \$6.25 Each

Hercules Bull Tie

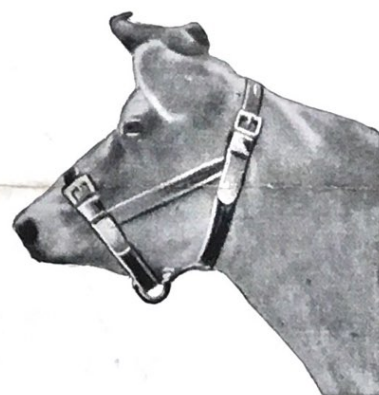
The "HERCULES" has proven itself a marvel in

1. Tying the bull inside, whether you have a stall or pen and either with or without a Stanchion.
2. As a show halter for bulls the "HERCULES" stands alone.
3. While not in use fasten the chain in the halter and leave it on as a safe guard for all times.



Fits-all Show Halter

Special quality leather, rounded nose and cheek straps, leather lead, brass trimmings adjustable so that it will fit any sized animal. An excellent halter for use at exhibition. Black or Taneach \$3.65
Calf Sizeeach \$3.25



Stable Halters

Russet color, sewed and riveted, the perfect fitting 1" strap.

No. 15 Cow size 1 inch.....\$1.65
No. 16 Cow size 1½ inch..... 1.95

Will furnish rope ties 6 ft. long attached to halter at 20c each.

R. LAACKE COMPANY

Milwaukee, Wis.